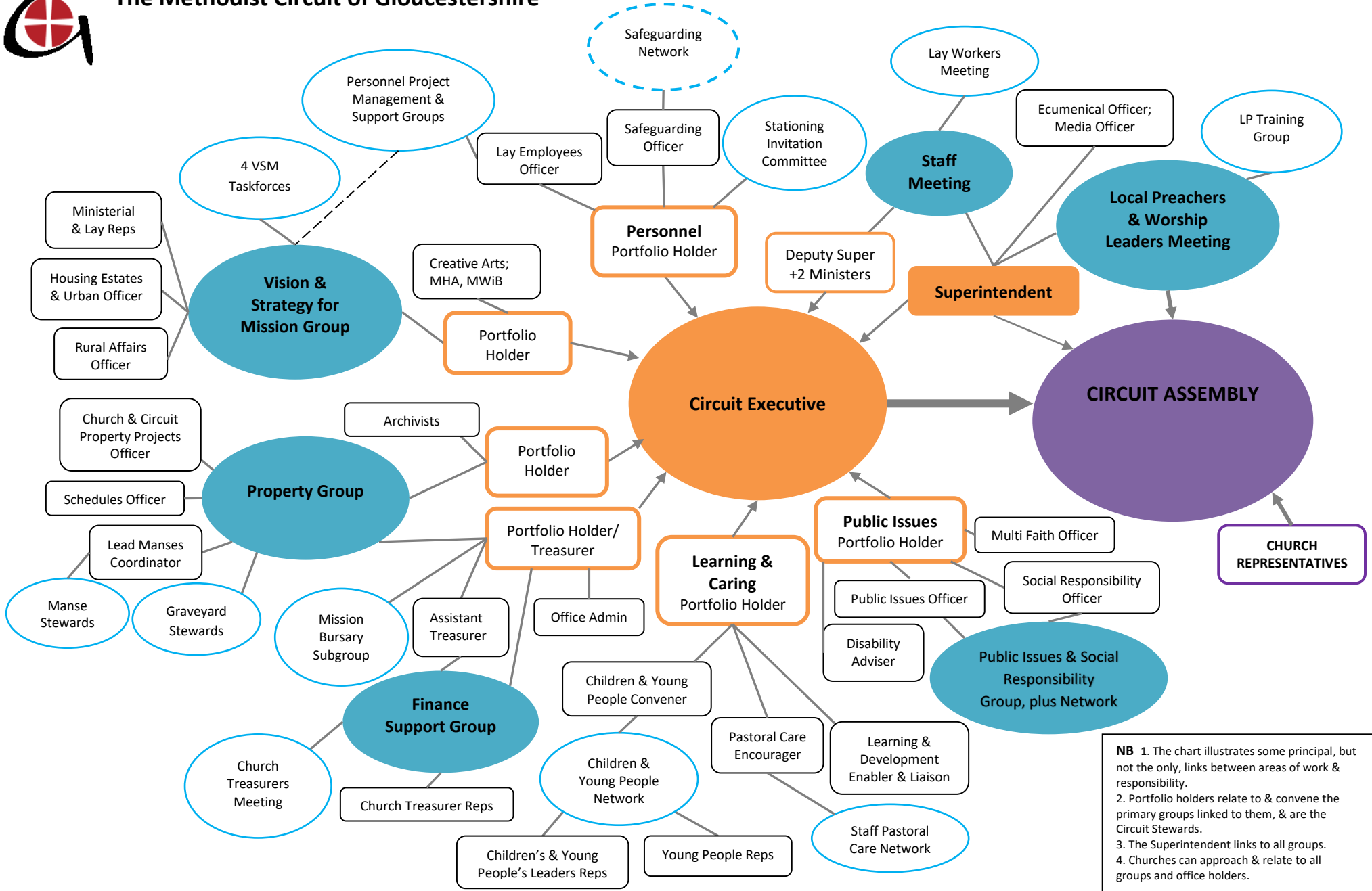


**NB**

1. The chart illustrates some principal, but not the only, links between areas of work & responsibility.
2. Portfolio holders relate to & convene the primary groups linked to them, & are the Circuit Stewards.
3. The Superintendent links to all groups.
4. Churches can approach & relate to all groups and office holders.



# The Methodist Circuit of Gloucestershire



**NB** 1. The chart illustrates some principal, but not the only, links between areas of work & responsibility.  
2. Portfolio holders relate to & convene the primary groups linked to them, & are the Circuit Stewards.  
3. The Superintendent links to all groups.  
4. Churches can approach & relate to all groups and office holders.